

# How to install the PCL driver

How do I install the PCL driver?

## PCL6 driver

Printer driver for B/W printing and Color printing in Windows. It supports HP PCL XL commands and is optimized for the Windows GDI. High performance can be expected.

## PCL5 driver

PCL5e for black-and-white devices; PCL5c for color devices. Although this driver has mainly been superseded by PCL6, these drivers are provided for backward compatibility.

## Information:

- If your operating system is Windows 2000, XP, NT 4.0, Vista, 7, and 8 you will need to log on as Administrator or Power User to install printer drivers.
- Please contact your Network Administrator if you want to install Printer Drivers for a networked printer.
- Make sure that you close all other applications before starting the installation.
- If you are updating to the latest version of the printer driver, it is important to uninstall the previous version first - always restart your computer after uninstalling drivers.

To install a driver for your device, follow these steps:

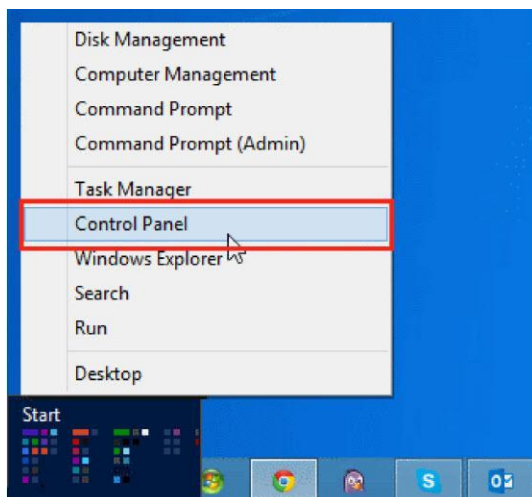
1. First, download the driver you want to install. You can download the latest drivers and software from <http://www.steamboatcopiers.com> the Support link then Drivers. Make sure that you download the correct version for your operating system. Expand the file if it is compressed, and save it in a temporary directory to access later.

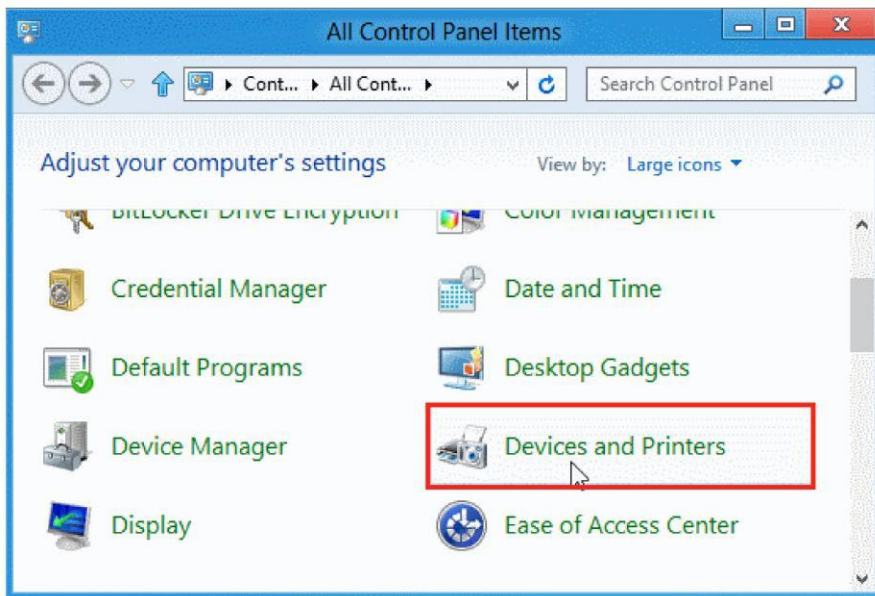
2. Open the printer list.

Note:

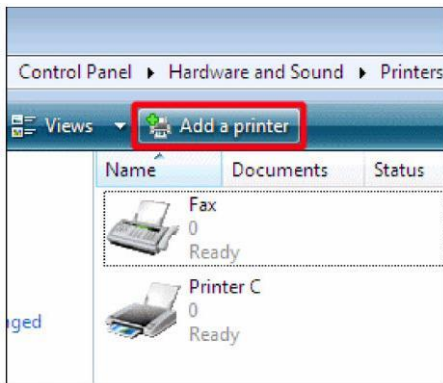
As of April 1st, 2008 support for Windows 98/ME has been discontinued. As of October 1st, 2011 support for Windows 2000 has been discontinued.

1. Right click **[Start]** on your Windows Desktop, then click **[Control Panel]**, and then click **[Devices and printers]**.

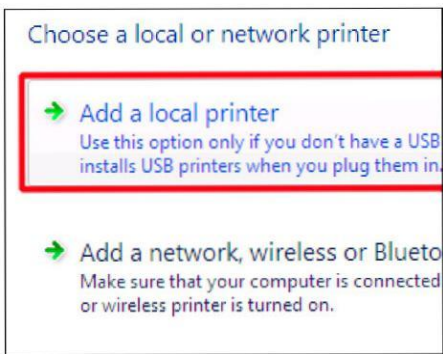




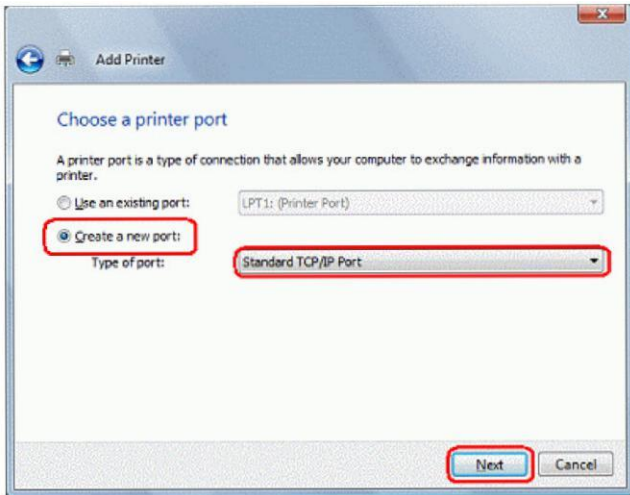
3. Click **[Add a printer]** (**[Add Printer]** on older versions of Windows) to activate the **[Add a printer]** Wizard.



4. Click **[Add a local printer]**.

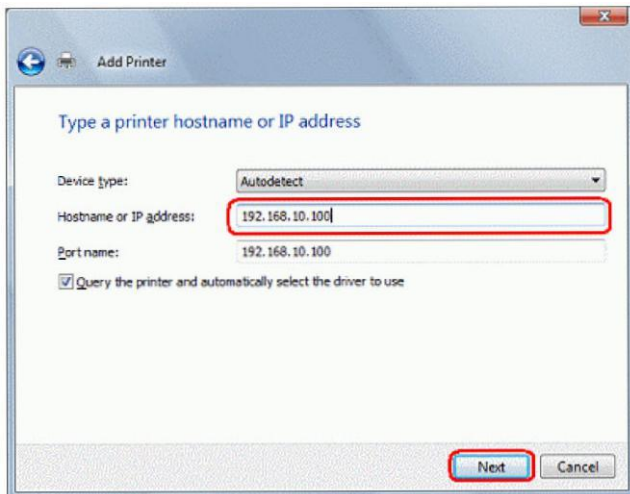


5. Click **[Create a new port]**, click **[Standard TCP/IP Port]** in the "Type of port" list, and then click **[Next]**.

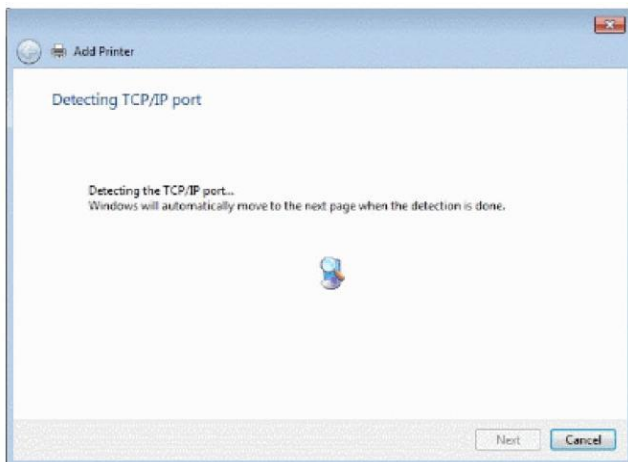


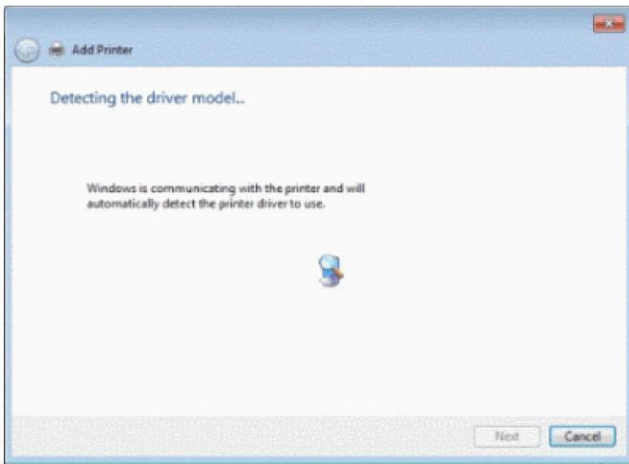
6. Type your device's IP address in the "Hostname or IP address" box, and then click **[Next]**.

Here, "192. 168.10.100" has been entered as an example.



7. Detecting TCP/IP port screen and Detecting the driver model screen are displayed.





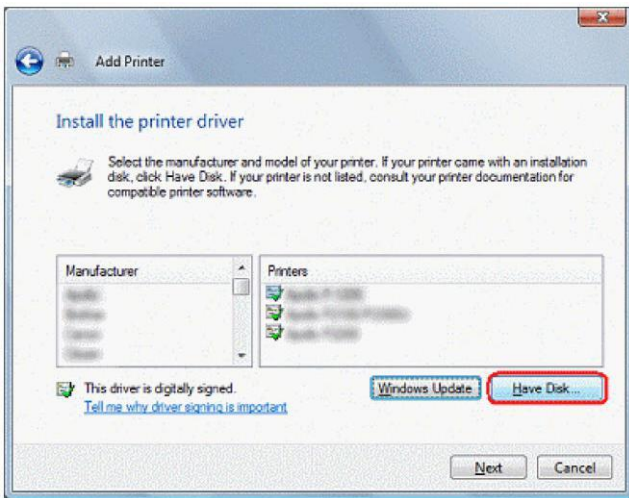
8. Once the TCP/IP port is found, the printer driver install screen appears.

**If the TCP/IP port cannot be found**

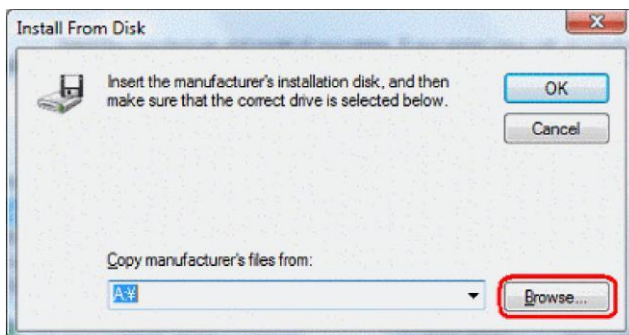
If the TCP/IP port cannot be found, a screen requesting further port information will appear. Check that your device is switched on and the device's IP address is correct.

9. On the printer driver install screen, click **[Have Disk]**.

**Note:** To use a pre-installed Windows Vista driver, click **[SAVIN]** in the **"Manufacturers"** box, click the desired driver in the **"Printers"** box, and move on to step 14.

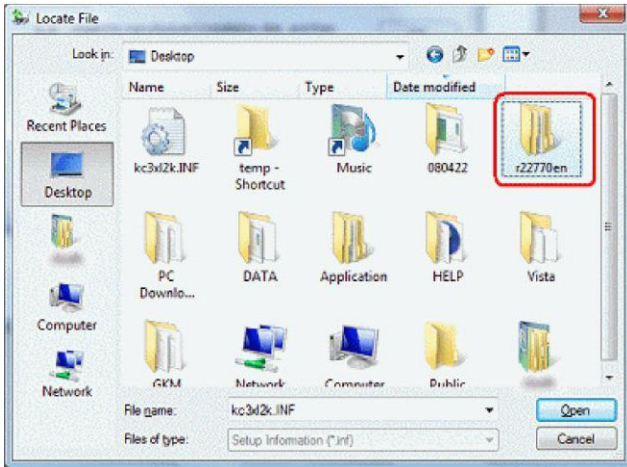


10. Click **[Browse]**.

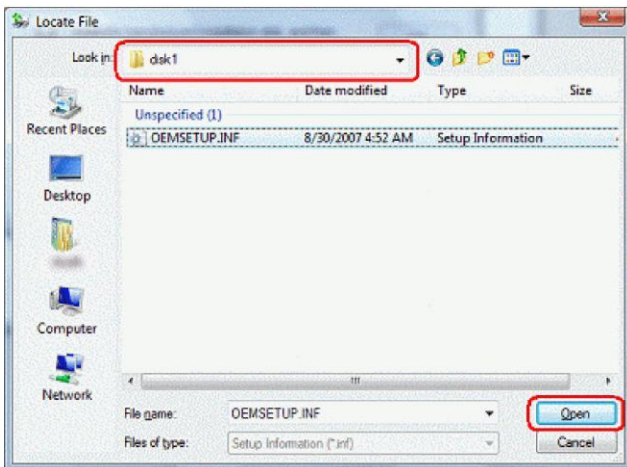


11. Specify the driver folder you saved earlier in step 1.

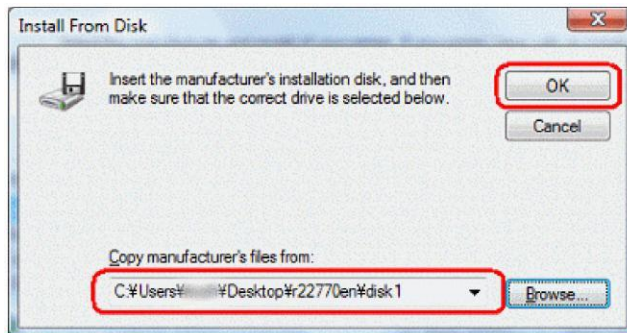
Here, we are using a folder "r22770en" as an example.



Confirm that "disk1" is displayed in the "Look in" box and the ".INF" file is selected in file name, and then click [Open].



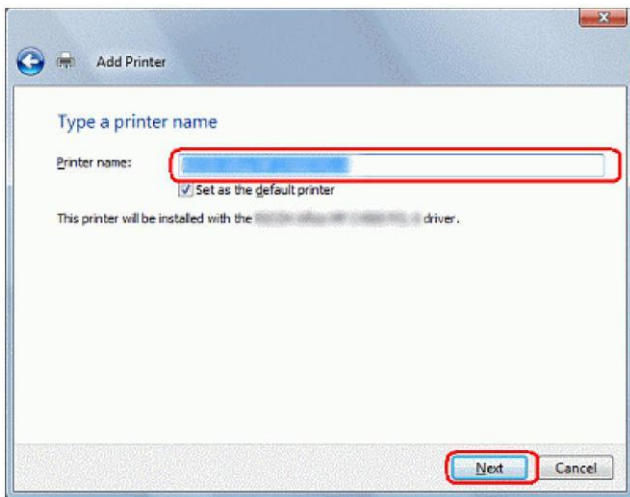
12. Confirm that the folder located in the above step is shown in the "Copy manufacturer's files from" box, and then click [OK].



13. Click on your device in the "Printers" box, and then click **[Next]**.

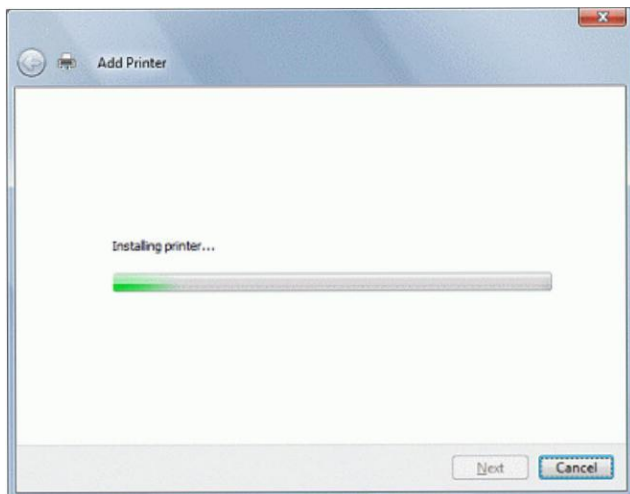


14. Enter a printer name, and click **[Set as the default printer]** if you want the device to be your default printer once it is installed. Then, click **[Next]**.

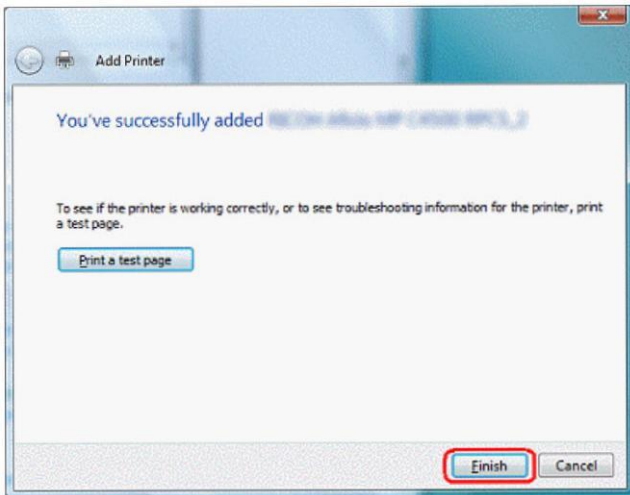


15. The driver file is installed.

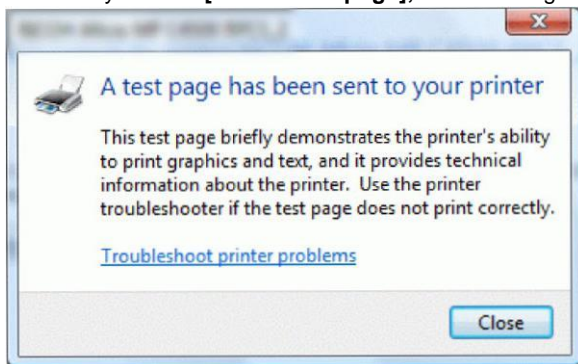
If a user account access rights warning appears during the installation, click **[Continue]**.  
If a Windows security warning appears during the installation, click **[Install this software]**.



16. Click **[Print a test page]** if you want to print a test page, and then click **[Finish]** once you are done.



**Note:** If you click **[Print a test page]**, the following window will be displayed.



17. Confirm that a new printer icon has been added to your Printers list

